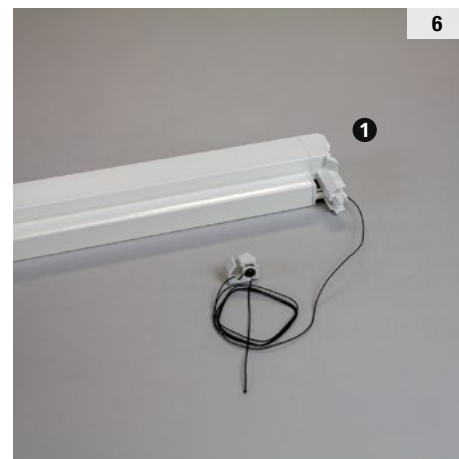
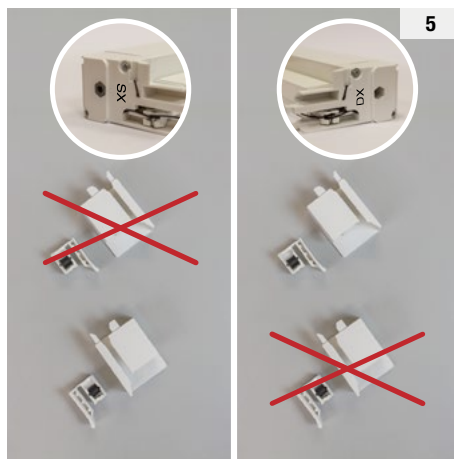
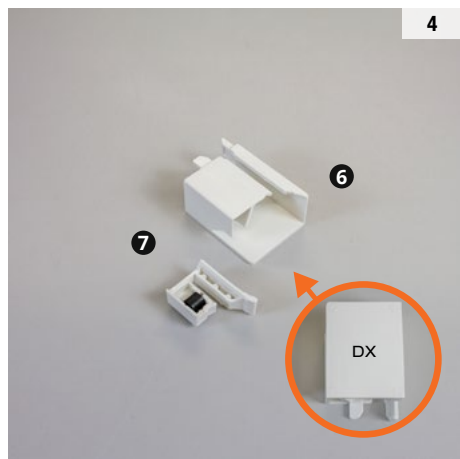
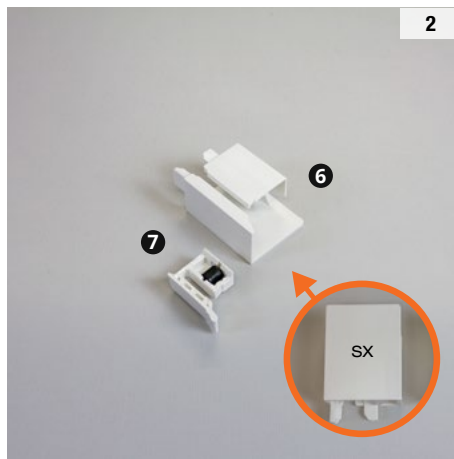
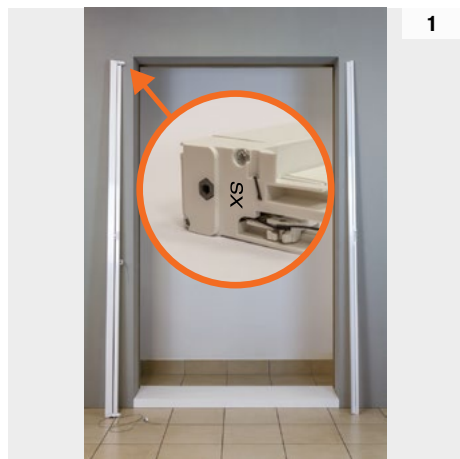
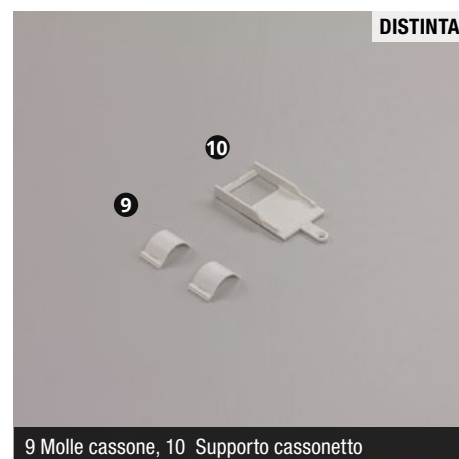
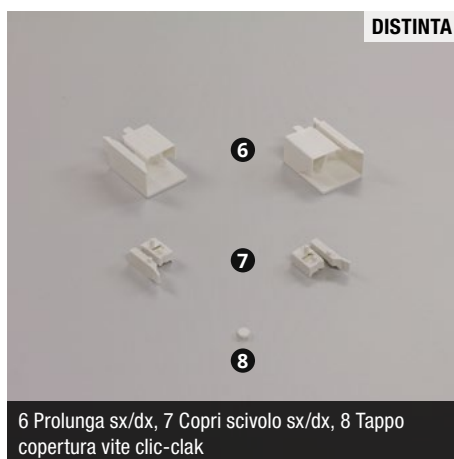


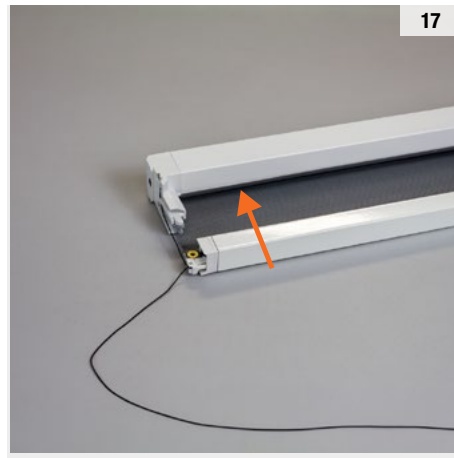
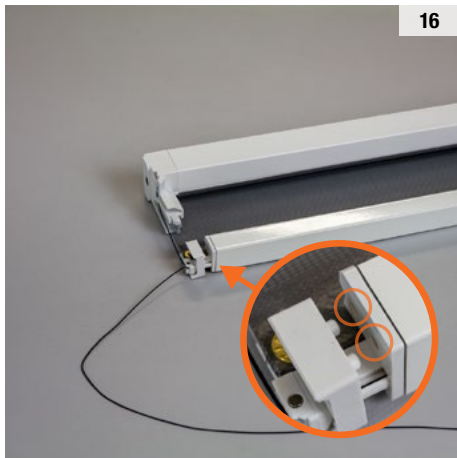
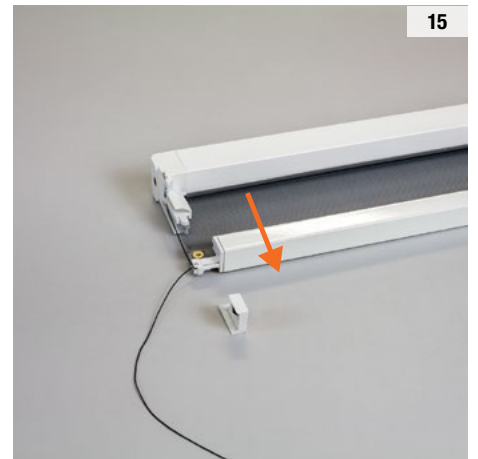
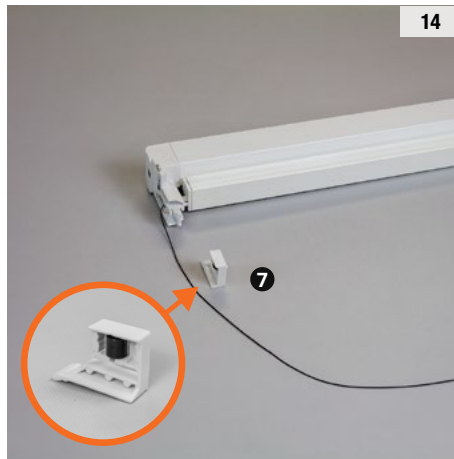
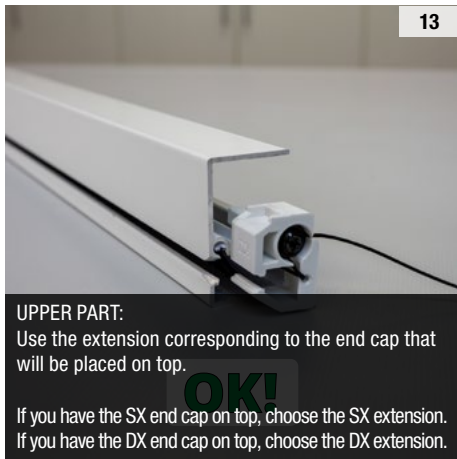
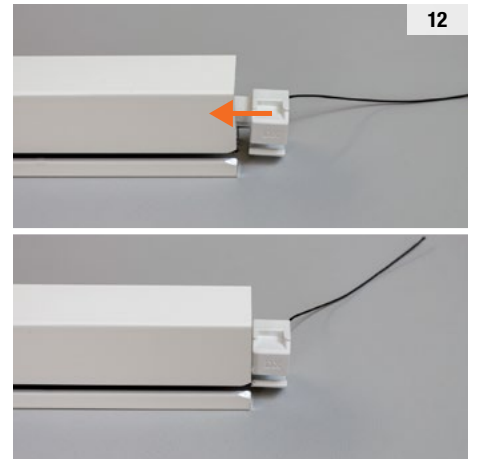
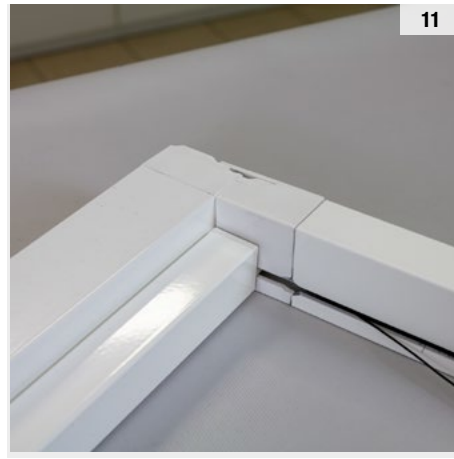
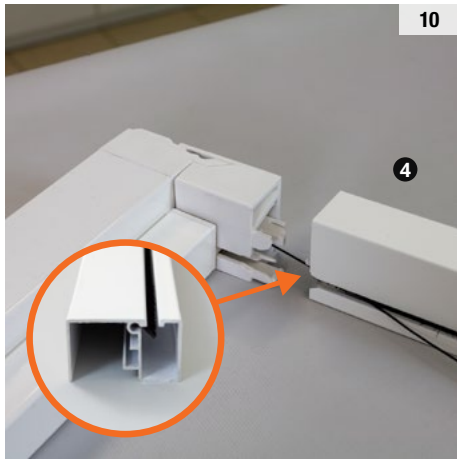
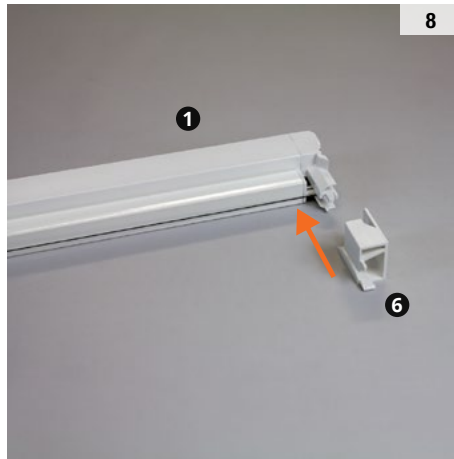
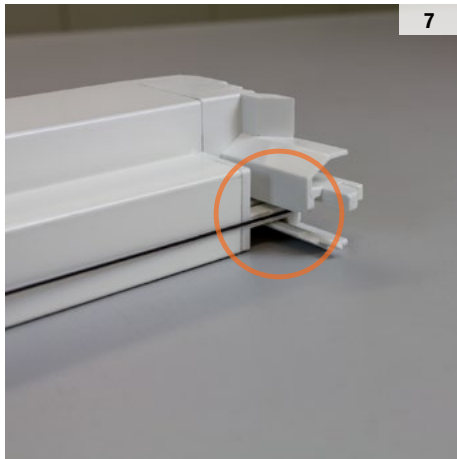
ISTRUZIONI DI MONTAGGIO

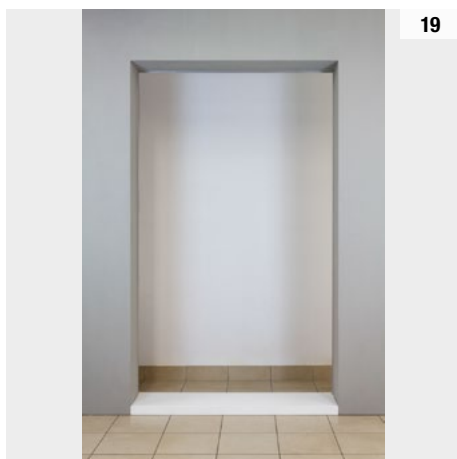
VIRTUS

by Bettio

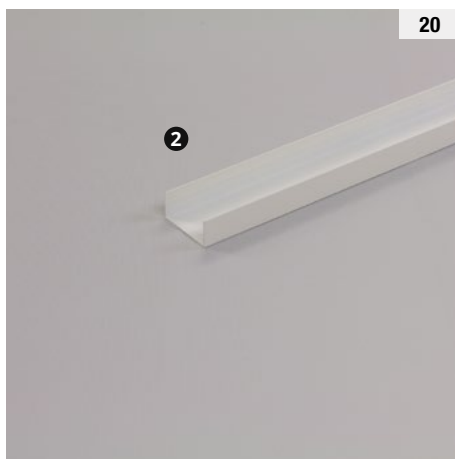
1 BATTENTE CON VITI – PRODUZIONE FINO AL 30/11/25







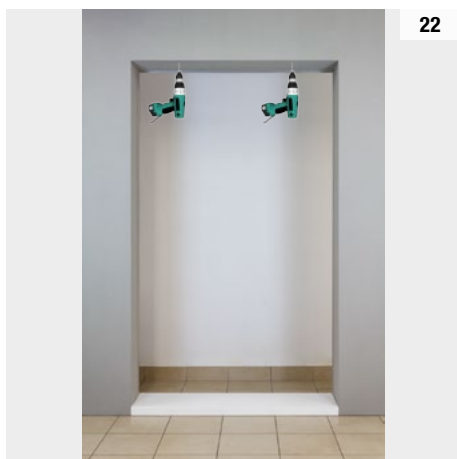
19



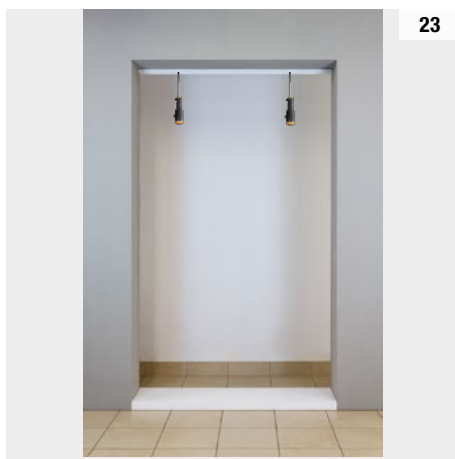
20



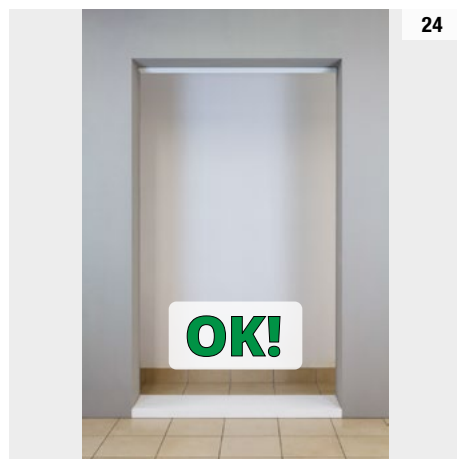
21



22



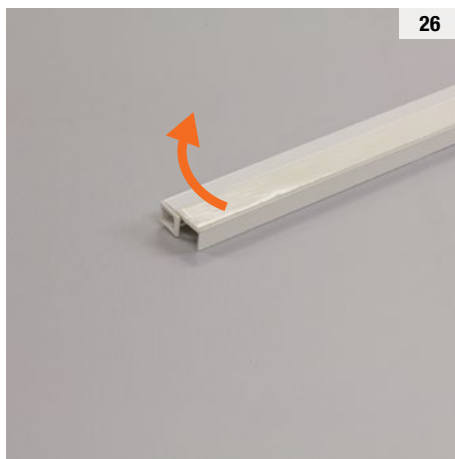
23



24



25



26



27

Sgrassare e asciugare la superficie di fissaggio prima di incollare il biadesivo: la completa adesione si ottiene dopo almeno 24 ore.



28



29



30

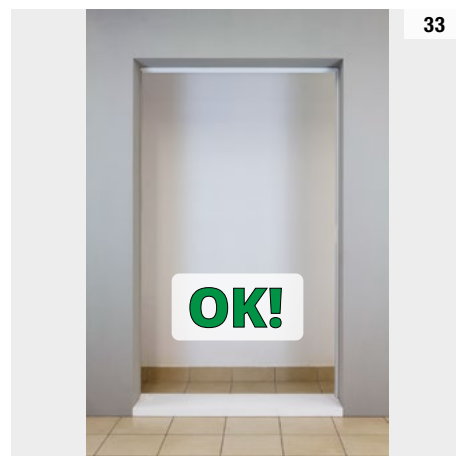
ø 8 mm



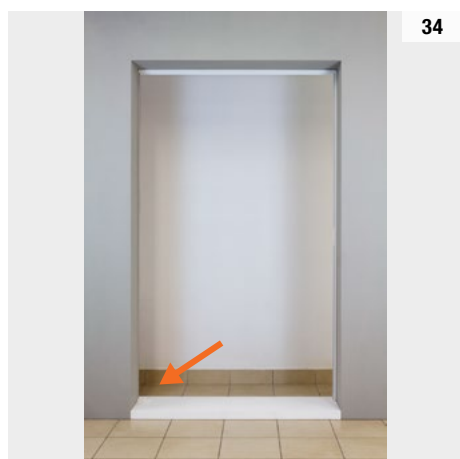
31



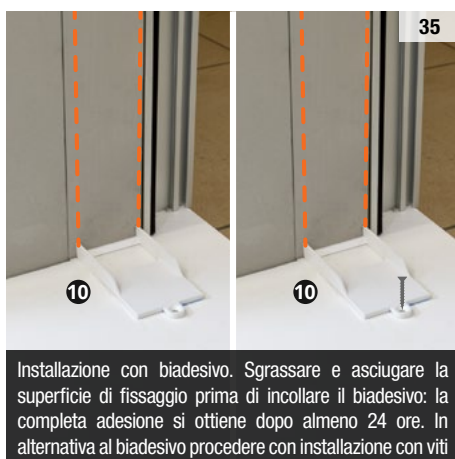
32



33

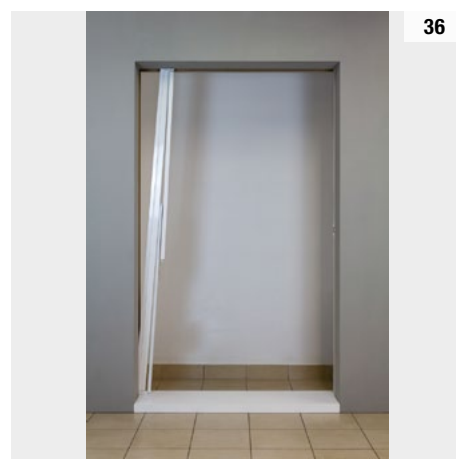


34



35

Installazione con biadesivo. Sgrassare e asciugare la superficie di fissaggio prima di incollare il biadesivo: la completa adesione si ottiene dopo almeno 24 ore. In alternativa al biadesivo procedere con installazione con viti



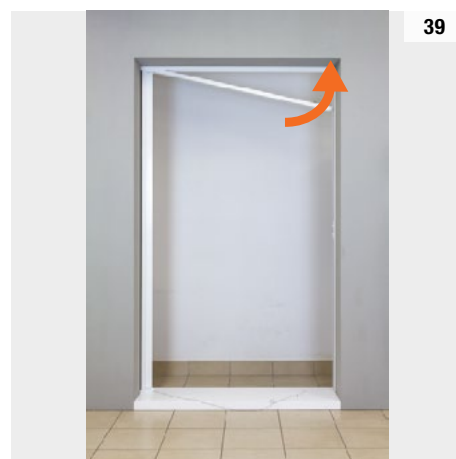
36



37



38



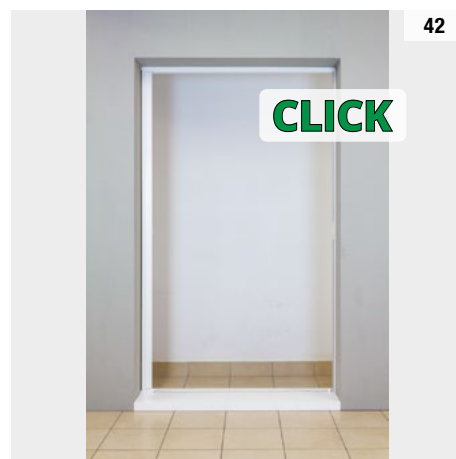
39



40



41



42

