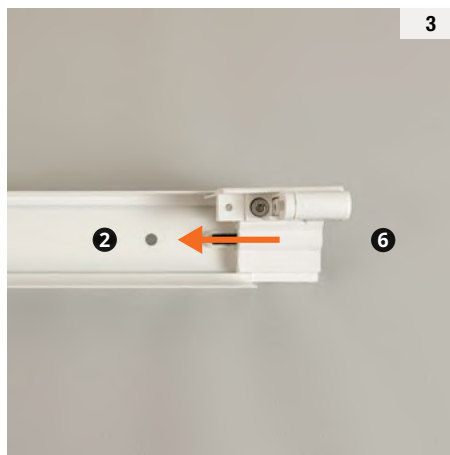
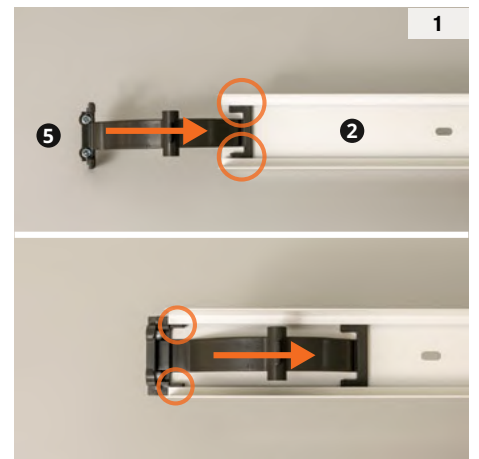
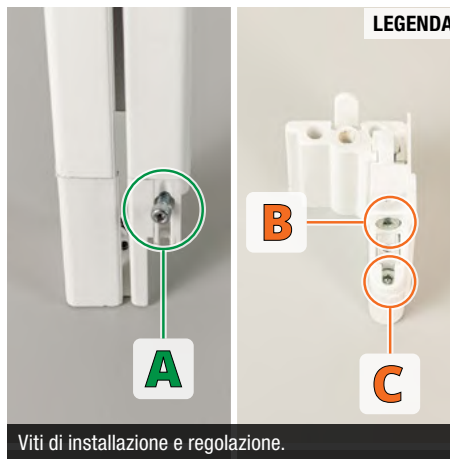
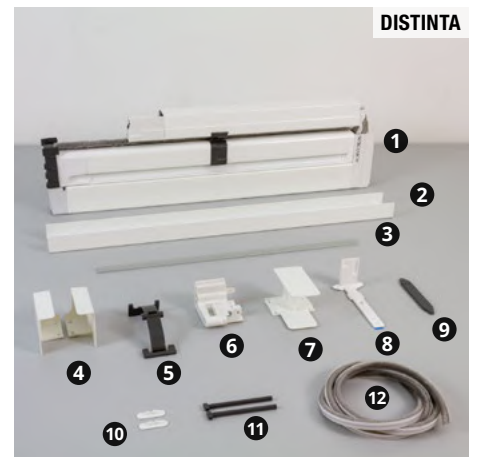
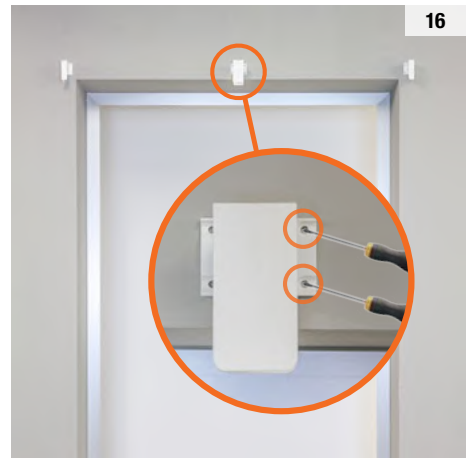
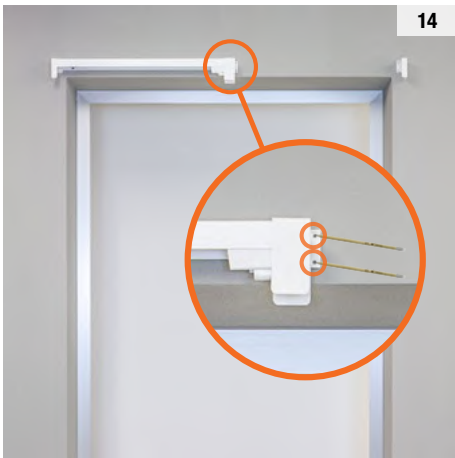
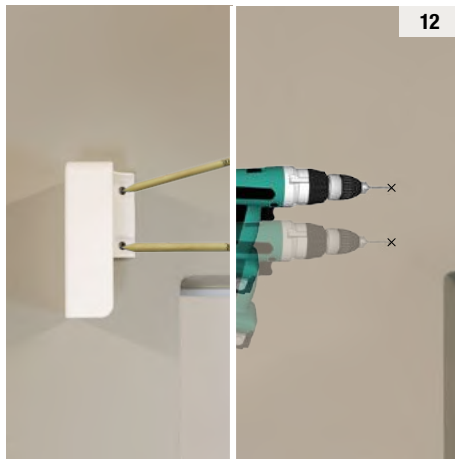
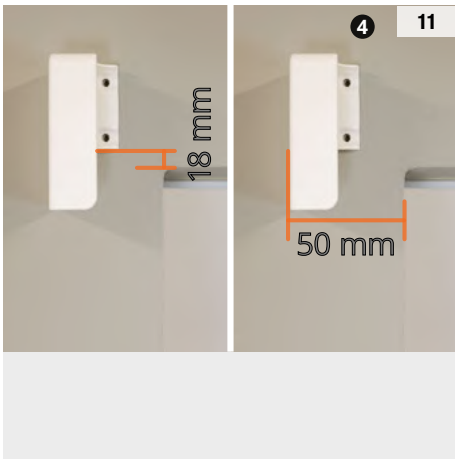
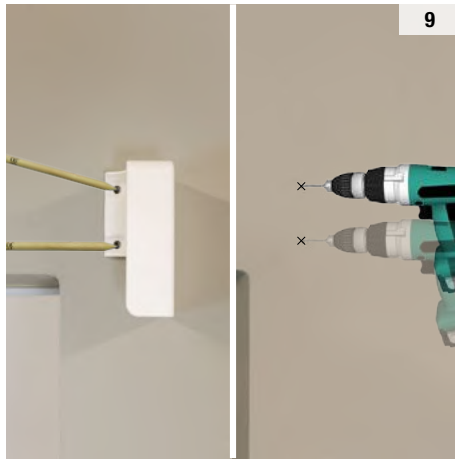
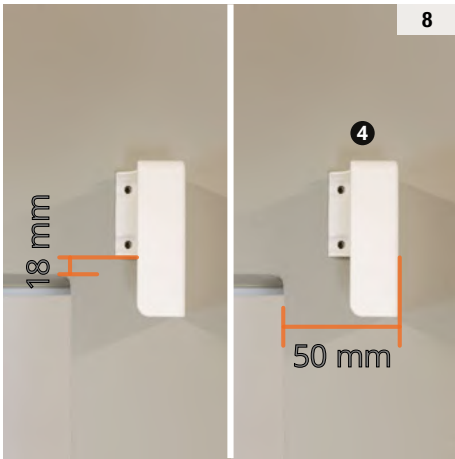
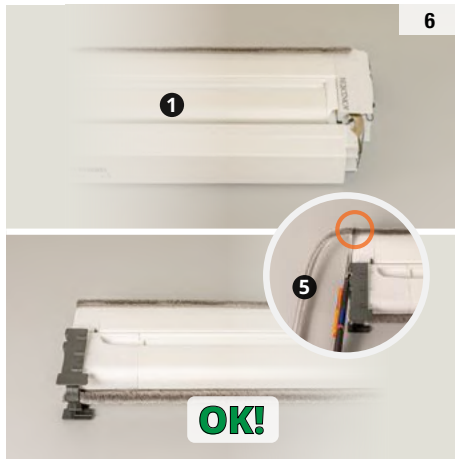
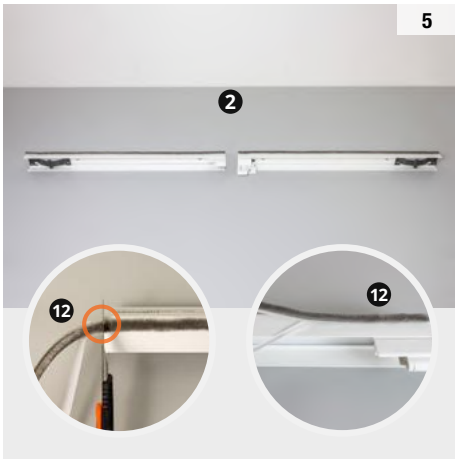


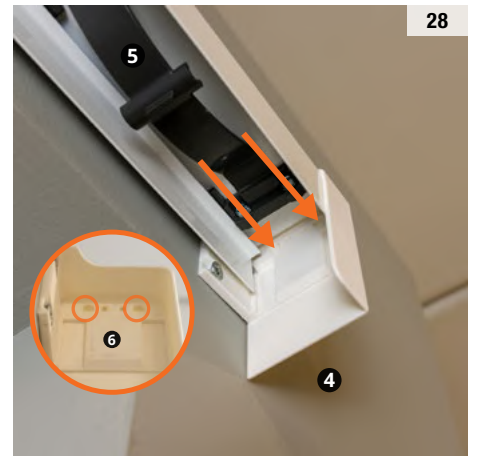
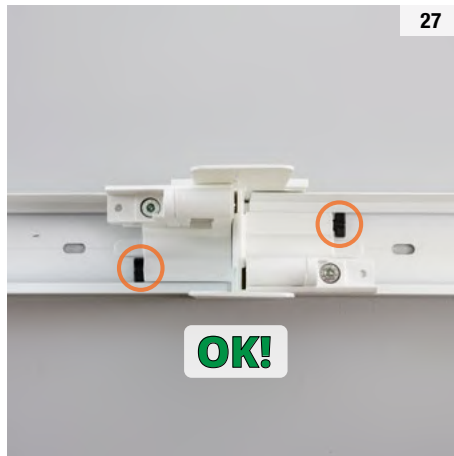
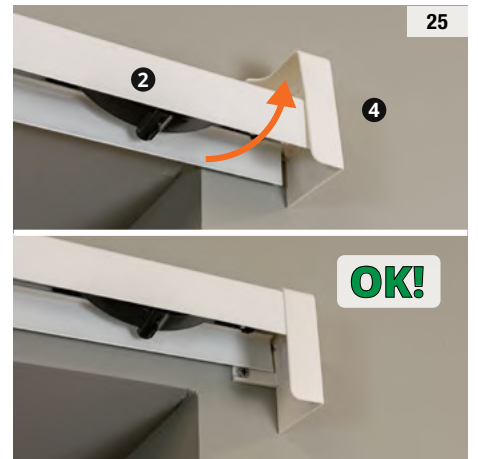
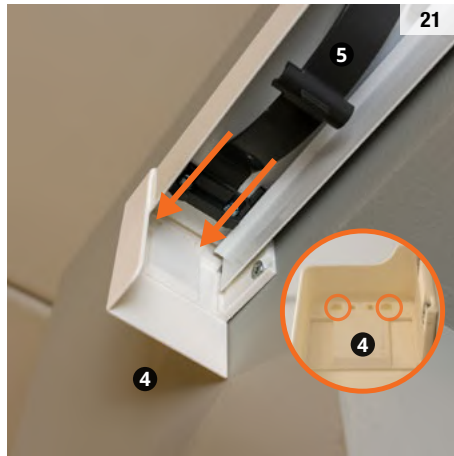
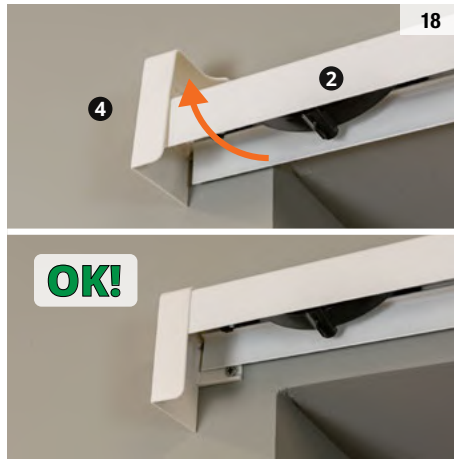
## ISTRUZIONI DI MONTAGGIO

# NEOSCENICA®

## V4 ATTACCO FRONTALE – 2 BATTENTI









29

Avvitare i grani (HEX3) e accertarsi che siano inseriti correttamente nelle apposite sedi.



30

OK!



31

Allineare perpendicolarmente i supporti cassonetto alle cuffie.



32

4 mm

8

Posizionare i supporti cassonetto a 4 mm dal muro.



33

Installazione con biadesivo.  
Sgrassare e asciugare la superficie di fissaggio prima di incollare il biadesivo: la completa adesione si ottiene dopo almeno 24 ore.



34

Installazione con viti.

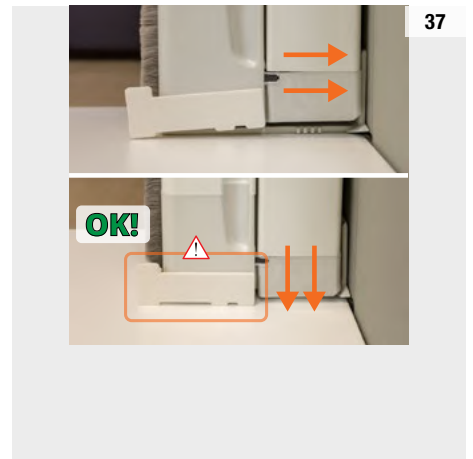


35

1



36



37



38

OK!



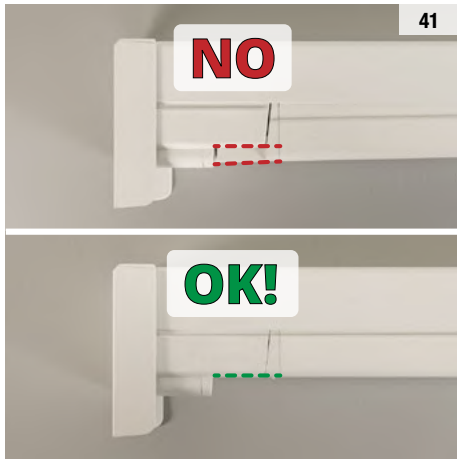
39

Accompagnare la guida senza forzare il movimento.

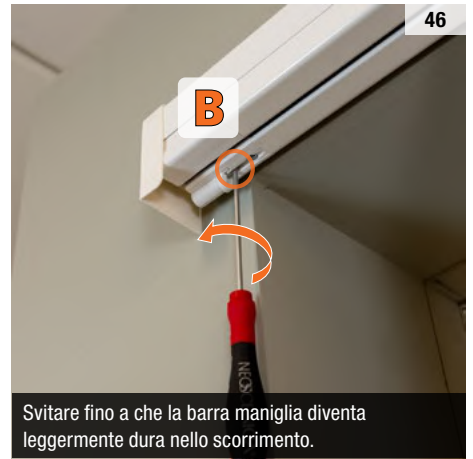
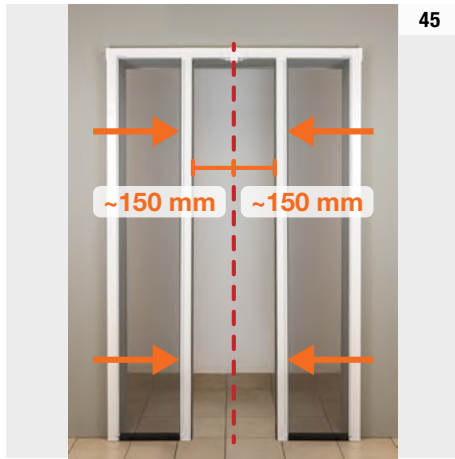


40

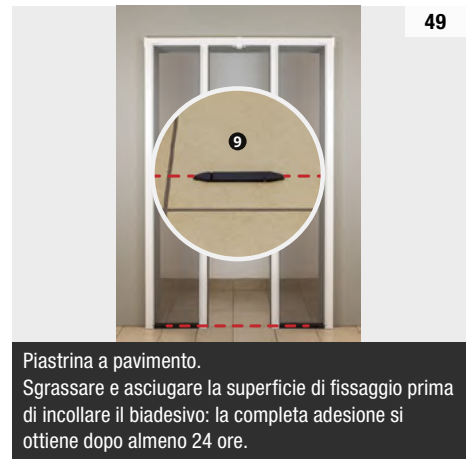
Avvitare completamente la vite.



Conservare l'accessorio in caso il prodotto debba essere imballato nuovamente.



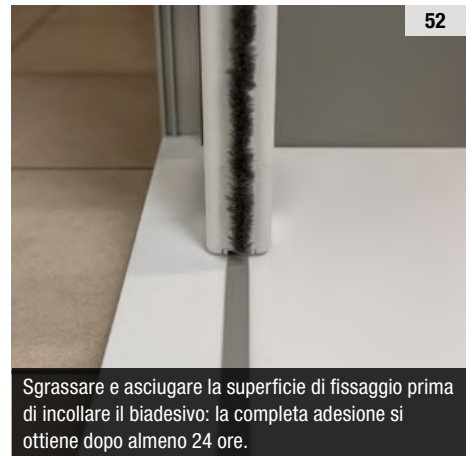
Svitare fino a che la barra maniglia diventa leggermente dura nello scorrimento.



Piastrina a pavimento.  
Sgrassare e asciugare la superficie di fissaggio prima di incollare il biadesivo: la completa adesione si ottiene dopo almeno 24 ore.




Profilo di scorrimento. Accessorio complementare. Installazione a discrezione.



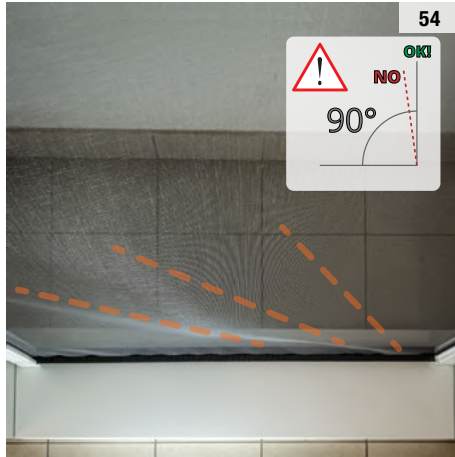
Sgrassare e asciugare la superficie di fissaggio prima di incollare il biadesivo: la completa adesione si ottiene dopo almeno 24 ore.

53

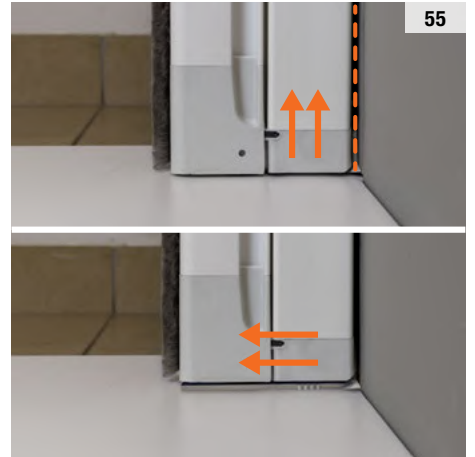


Se l'installazione di Neoscenica è stata eseguita correttamente, non dovrebbe essere necessario regolare alcun fuori squadra. Se invece fosse necessario, procedere come indicato negli step successivi.

54



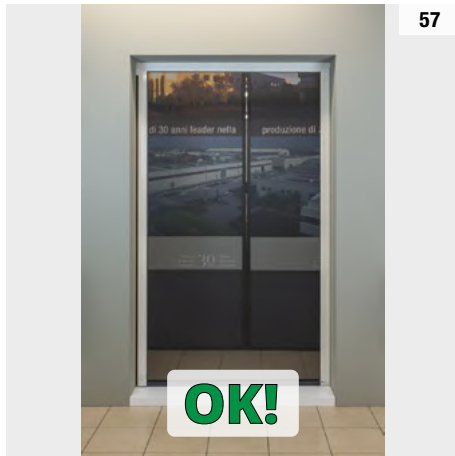
55



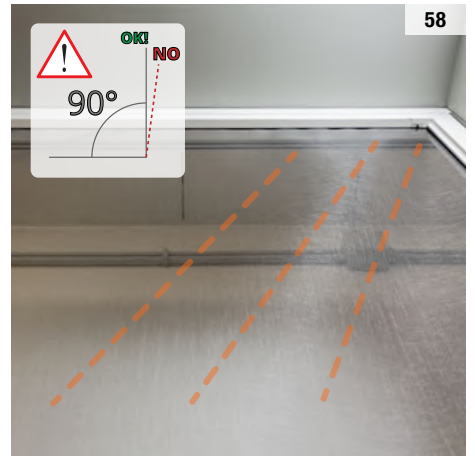
56



57



58



59



60

