

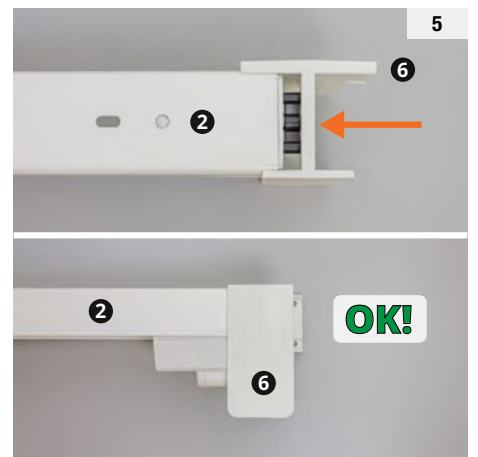
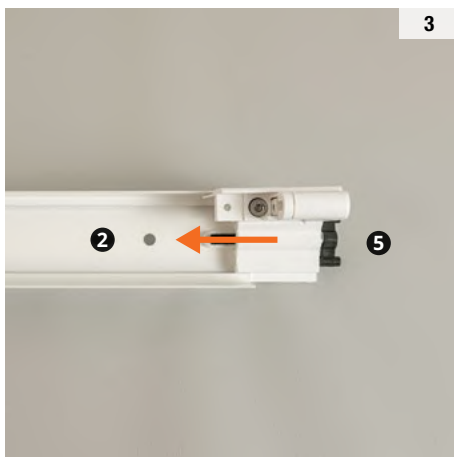
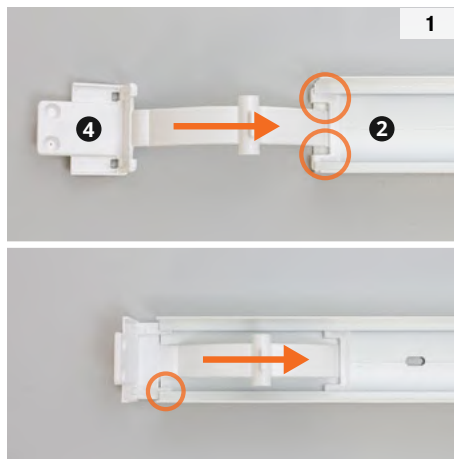
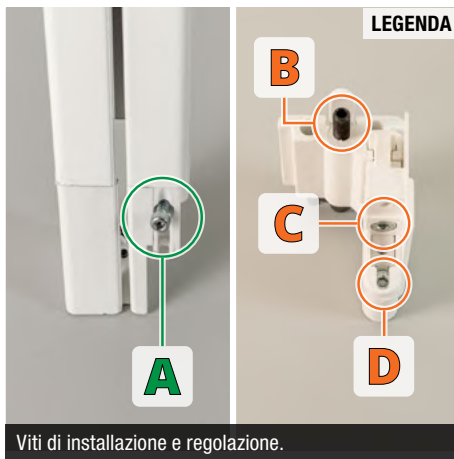
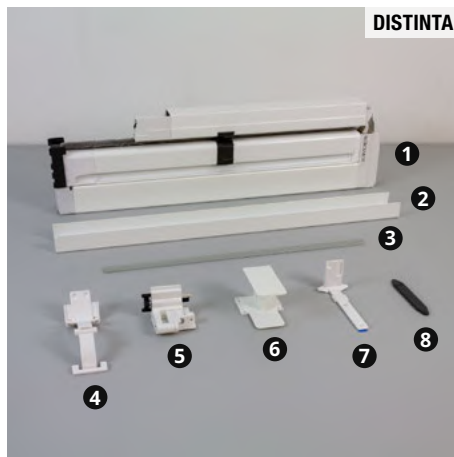
ISTRUZIONI DI MONTAGGIO

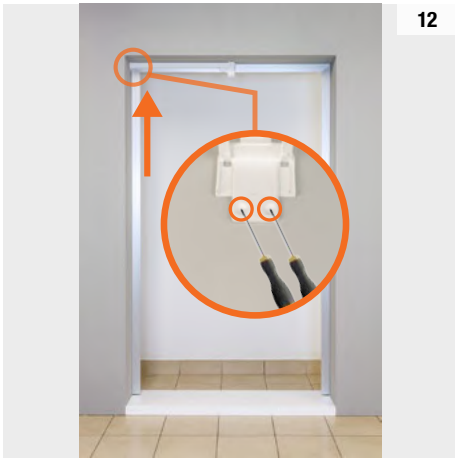
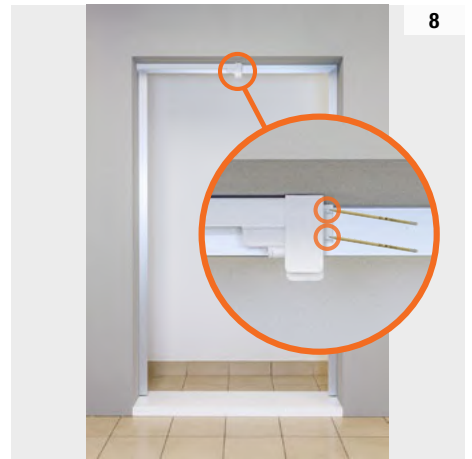
NEOSCENICA®

V2 CIELINO NON PORTANTE – 2 BATTENTI CON VITI LATERALI

DISTINTA

- 1 Zanzariera
- 2 Profilo compensatore (x2)
- 3 Profilo di scorrimento (opt)
- 4 Molla di spinta (x2)
- 5 Gruppo di spinta (x2)
- 6 Cuffia 2 battenti
- 7 Supporto cassonetto (x2)
- 8 Piastrina a pavimento



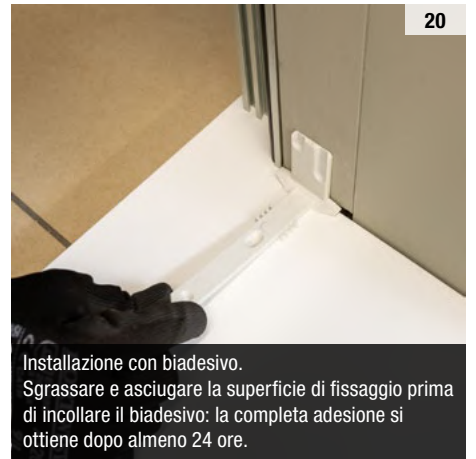




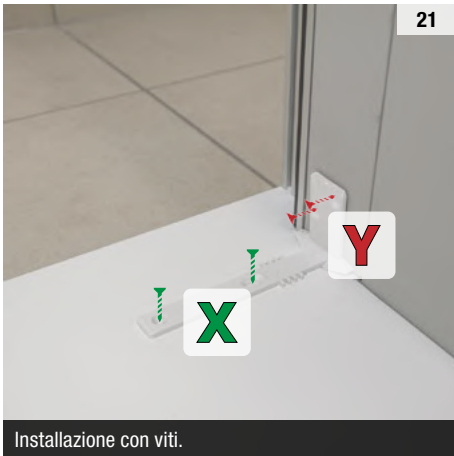
18



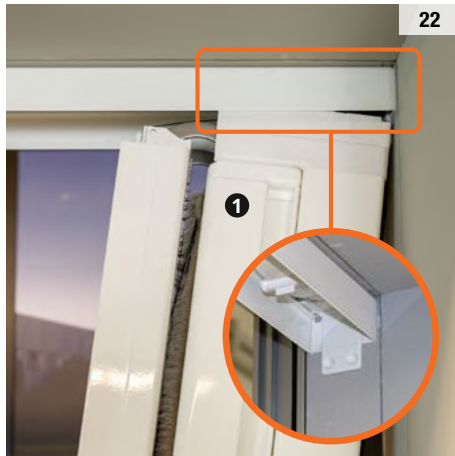
19



20



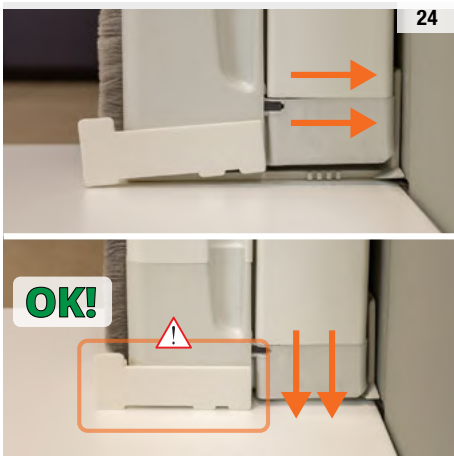
21



22



23



24



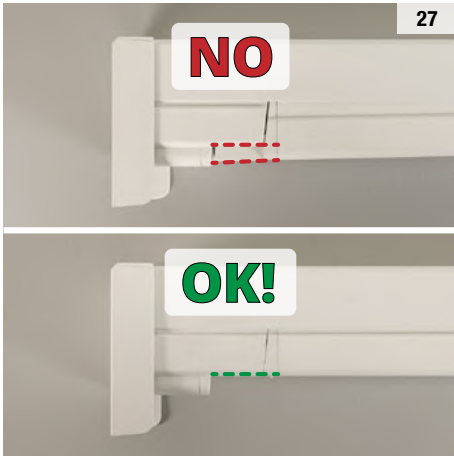
25

Avvitare completamente la vite.



26

Accompagnare la guida senza forzare il movimento.

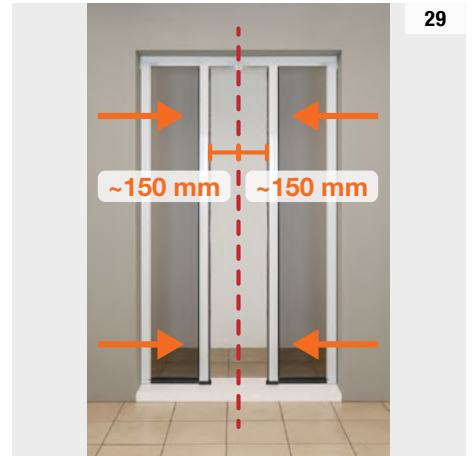


27

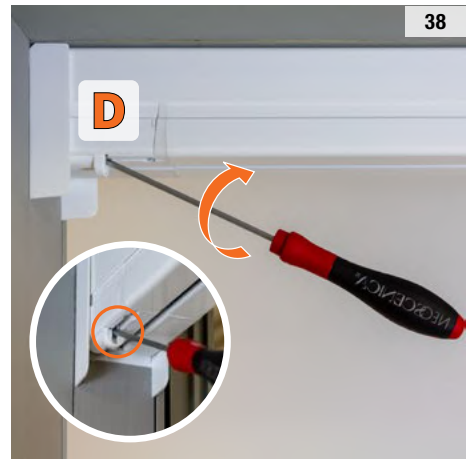
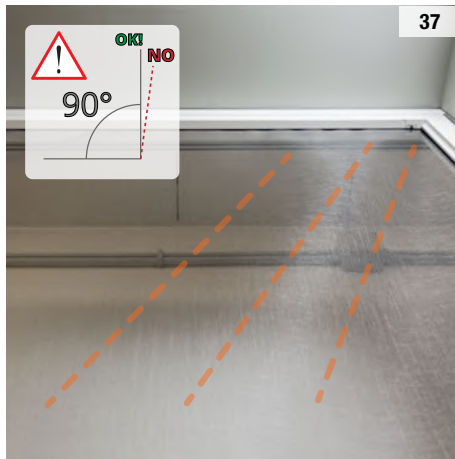
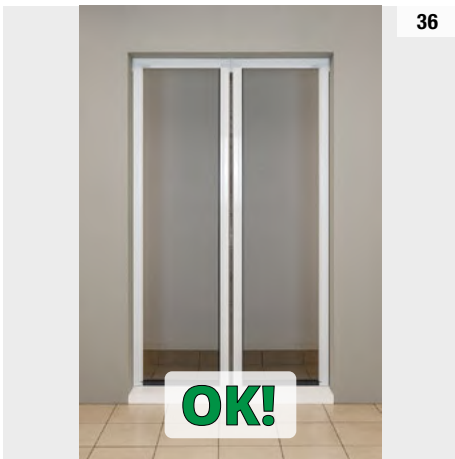
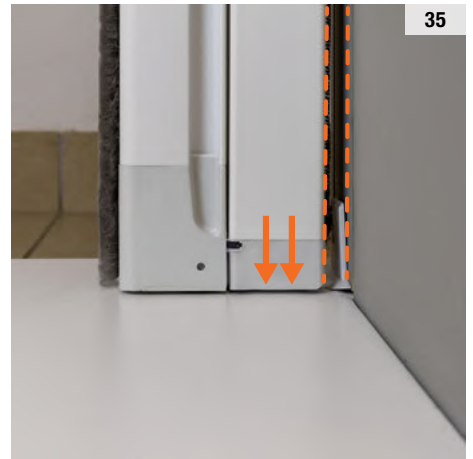
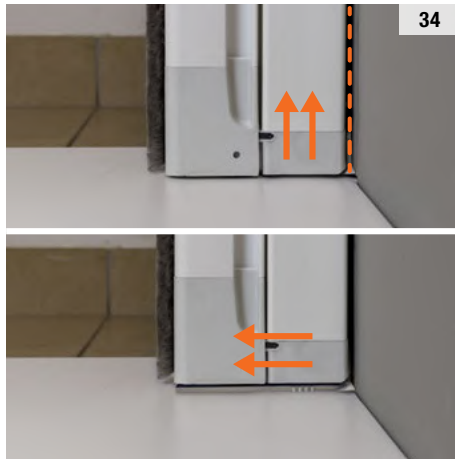
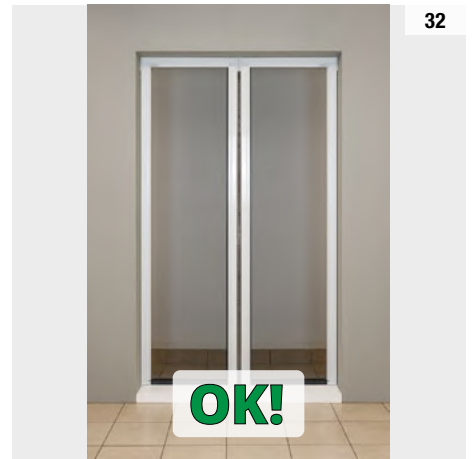


28

Conservare l'accessorio in caso il prodotto debba essere imballato nuovamente.



29





Sgrassare e asciugare la superficie di fissaggio prima di incollare il biadesivo: la completa adesione si ottiene dopo almeno 24 ore.